

# Checklist for Residents Living in Spotted Lanternfly Quarantine Areas

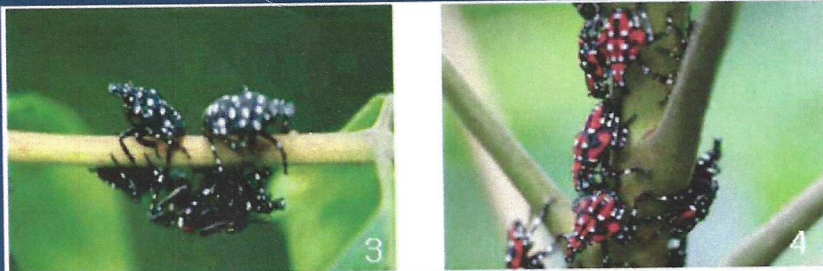
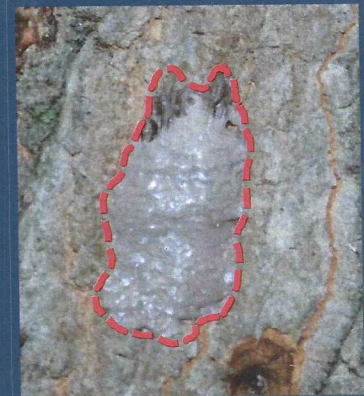
**IMPORTANT:** Before you move outdoor items from the quarantine area, check for spotted lanternfly egg masses, adults, and nymphs. Make sure all items are pest free before you move them. Help keep this pest from spreading.

If you find any of these life stages of the Spotted Lanternfly, remove, devitalize, place in a sealed bag, and dispose of bag in the garbage.



Adult Spotted Lanternfly, present in autumn months.

Fresh Spotted Lanternfly egg mass (outlined in red). Egg masses are present in autumn and winter months, blending in with their surroundings.



Spotted Lanternfly nymphs, present in spring and summer months. (Images from Park et al. 2009)

By signing this checklist, I am confirming that I have inspected my vehicle and those items I am moving from the Spotted Lanternfly quarantine area, and do not see any egg masses or insects in or on anything I am moving.

Signature \_\_\_\_\_ Address \_\_\_\_\_ Date \_\_\_\_\_

Please sign, date, and keep this checklist in your vehicle with you use it each time you need it.

For more information,  
Visit the New Jersey Department of Agriculture website:  
<https://www.state.nj.us/agriculture/divisions/pi/prog/spottedlanternfly.html>



# Spotted Lanternfly - See the Signs



## Nymph Stage

1st instar - April to June  
 2nd & 3rd - June to July  
 4th instar - July to Sept (red)



## Adult Stage

July – December



## Egg Masses

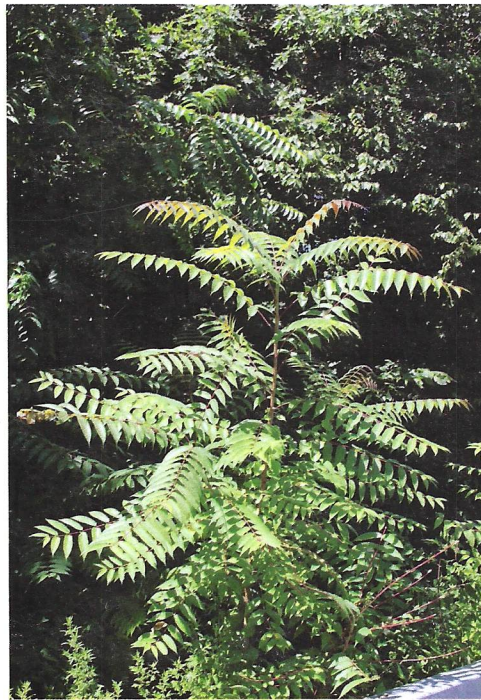
September to April  
 (unhatched)



## Staghorn Sumac

*Rhus typhina*

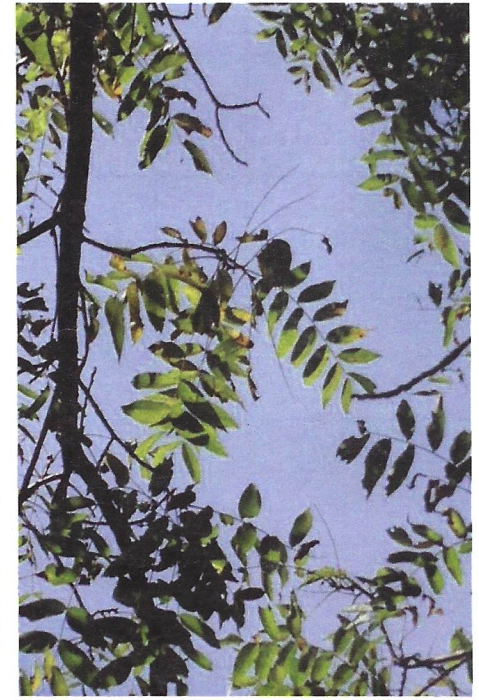
- Toothed leaf edge
- Upright red, fuzzy fruit
- Twigs are fuzzy
- Smooth bark
- Horizontal lenticels on bark
- Grows in clonal colonies



## Tree of Heaven

*Ailanthus altissima*

- Primary host
- Smooth leaf edge
- 1-2 teeth at leaf base
- Strong odor (burnt peanut butter)
- V or heart-shaped leaf scar
- No terminal bud
- Papery seed
- Light gray/brown bark
- cantaloupe bark pattern



## Black Walnut

*Juglans nigra*

- Toothed leaf edge
- Large round fruit
- "Monkey-faced" leaf scar
- Chambered dark pith
- dark, rough diamond pattern bark