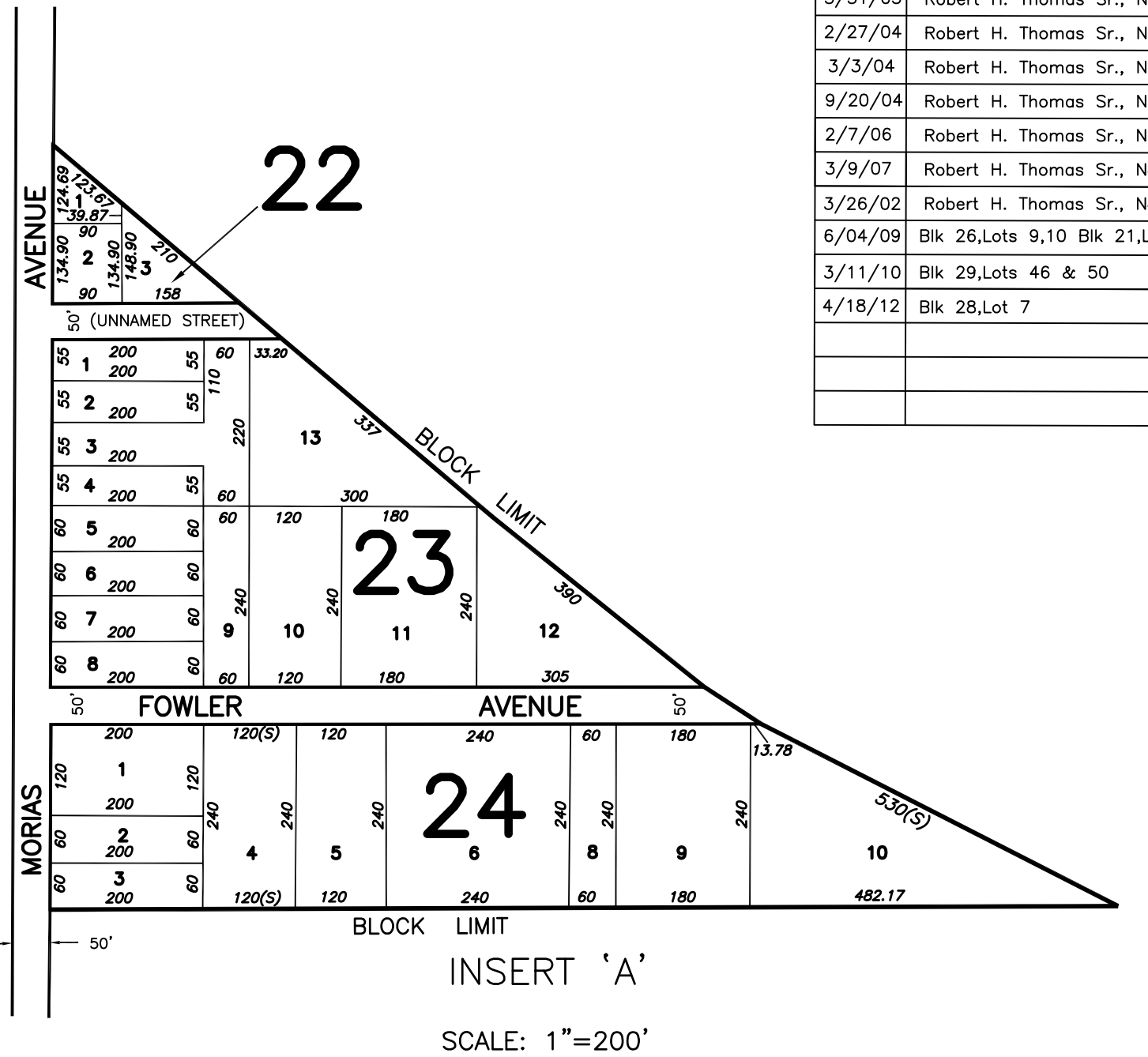
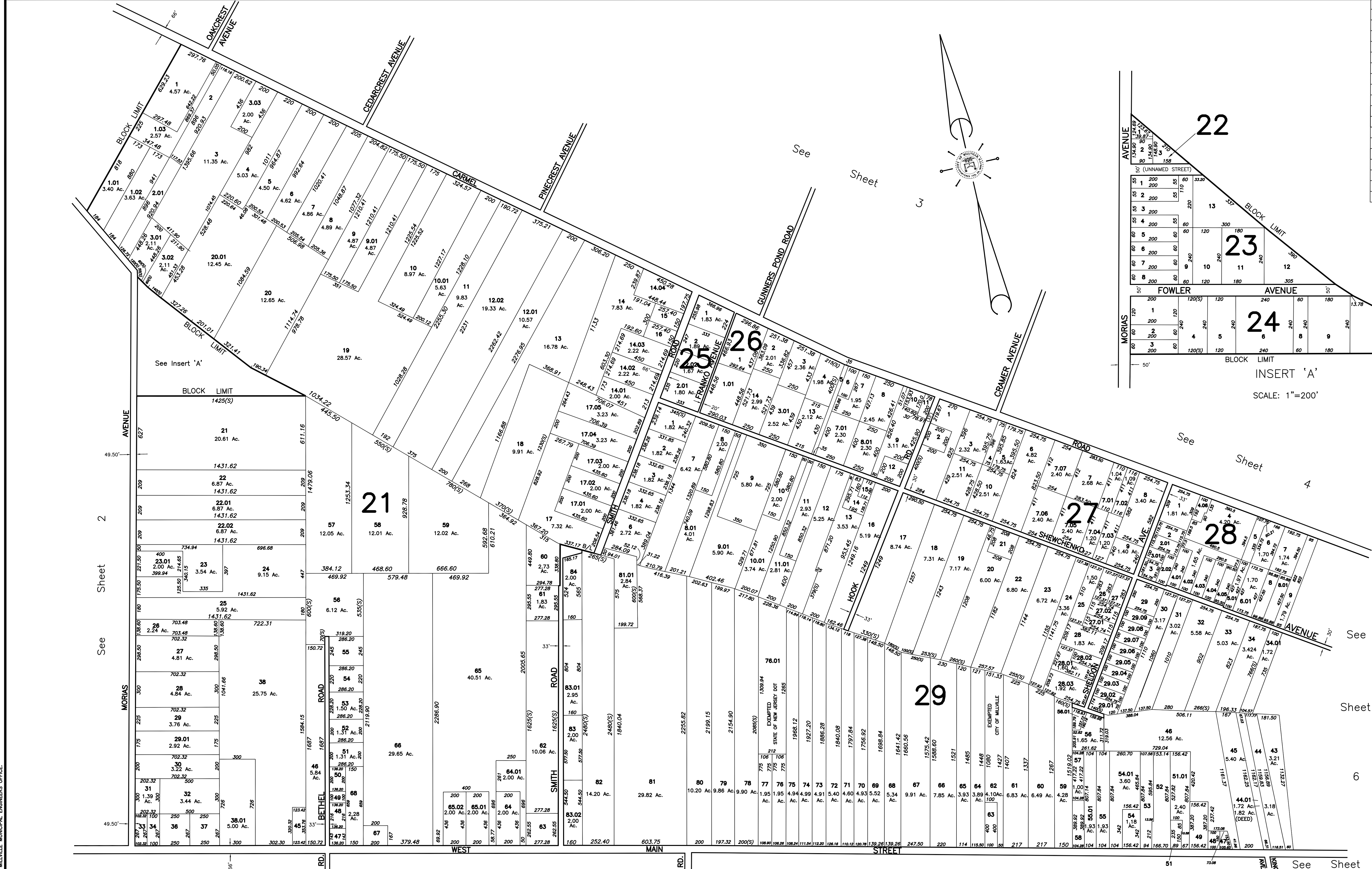


REVISIONS		
DATE	NAME	NUMBER
3/26/02	Robert H. Thomas Sr., NLS	20371
5/29/02	Robert H. Thomas Sr., NLS	20371
9/11/02	Robert H. Thomas Sr., NLS	20371
9/13/02	Robert H. Thomas Sr., NLS	20371
3/31/03	Robert H. Thomas Sr., NLS	20371
2/27/04	Robert H. Thomas Sr., NLS	20371
3/3/04	Robert H. Thomas Sr., NLS	20371
9/20/04	Robert H. Thomas Sr., NLS	20371
2/7/06	Robert H. Thomas Sr., NLS	20371
3/9/07	Robert H. Thomas Sr., NLS	20371
3/26/02	Robert H. Thomas Sr., NLS	20371
6/04/09	Blk 26,Lots 9,10 Blk 21,Let12	20371
3/11/10	Blk 29,Lots 46 & 50	20371
4/18/12	Blk 28,Lot 7	20371



THIS SHEET IS A DIGITIZED COPY OF THE TAX MAP PREPARED BY ROBERT H. THOMAS SR., P.E. AND DATED JUNE 2001. THE APPROVED ORIGINAL IS ON FILE IN THE CITY OF MILLVILLE MUNICIPAL ENGINEERS OFFICE.

TAX ASSESSMENT MAP
CITY OF MILLVILLE
 CUMBERLAND COUNTY, NEW JERSEY
 SCALE: 1" = 400' JUNE 2001
ROBERT H. THOMAS, SR., NLS 20371
 2429 E. MAIN ST. MILLVILLE, NEW JERSEY

NEW JERSEY DEPARTMENT OF THE TREASURY
 DIVISION OF TAXATION
 PROPERTY ADMINISTRATION
 APPROVED AS A TAX MAP PURSUANT TO THE AUTHORITY OF
 N.J.S.A. 54:1-15 & 54:50-1
 FOR THE DIRECTOR, DIVISION OF TAXATION
James J. Coll C.T.A.
 JAMES J. COLL, CHIEF LOCAL ASSESSMENT COMPLIANCE
William H. Black C.T.A.
 WILLIAM H. BLACK, SUPERVISING ENGINEER UTILITIES
 DATE: JAN 15 2012 SERIAL NO. 798