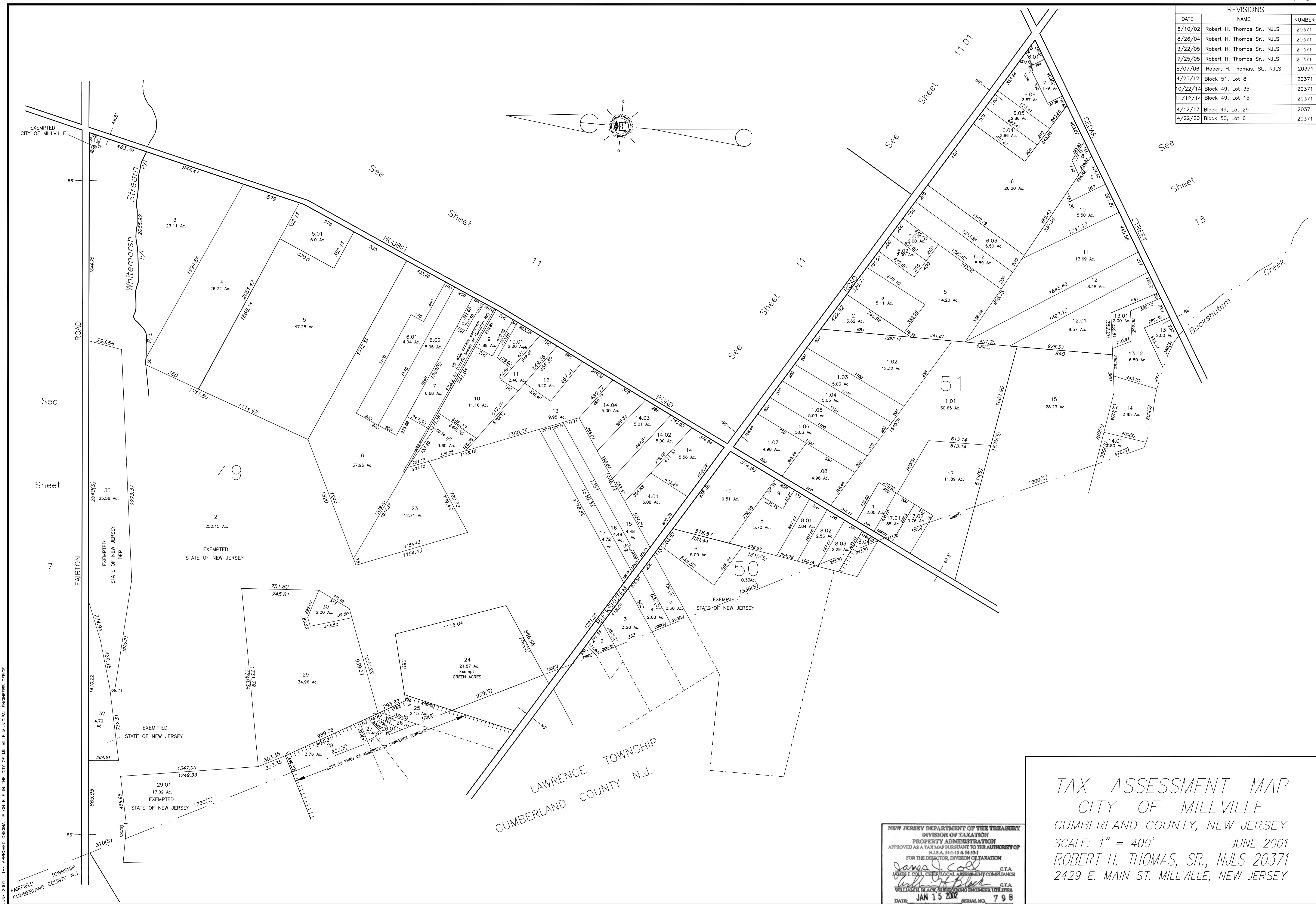


REVISIONS		
DATE	NAME	NUMBER
6/10/02	Robert H. Thomas Sr., N.J.S.	20371
8/26/04	Robert H. Thomas Sr., N.J.S.	20371
3/22/05	Robert H. Thomas Sr., N.J.S.	20371
7/25/05	Robert H. Thomas Sr., N.J.S.	20371
8/07/06	Robert H. Thomas, St., N.J.S.	20371
4/25/12	Block 51, Lot 8	20371
10/22/14	Block 49, Lot 35	20371
11/12/14	Block 49, Lot 15	20371
4/12/17	Block 49, Lot 29	20371
4/22/20	Block 50, Lot 6	20371



THIS SHEET IS A REPRODUCED COPY OF THE TAX MAP PREPARED BY ROBERT H. THOMAS, SR., P.E. AND DATED JUNE 2001. THE APPROVED ORIGINAL IS ON FILE IN THE CITY OF MILLVILLE MUNICIPAL ENGINEERS OFFICE.

TAX ASSESSMENT MAP
CITY OF MILLVILLE
 CUMBERLAND COUNTY, NEW JERSEY
 SCALE: 1" = 400' JUNE 2001
 ROBERT H. THOMAS, SR., N.J.S. 20371
 2429 E. MAIN ST. MILLVILLE, NEW JERSEY

NEW JERSEY DEPARTMENT OF THE TREASURY
 DIVISION OF TAXATION
 PROPERTY ADMINISTRATION
 APPROVED AS A TAX MAP PURSUANT TO THE AUTHORITY OF
 N.J.S.A. 54:1-15 & 54:5-1
 FOR THE DIRECTOR, DIVISION OF TAXATION
James J. Coll C.T.A.
 JAMES J. COLL, CHIEF LOCAL ASSESSMENT COMPLIANCE
William H. Black C.T.A.
 WILLIAM H. BLACK, SUPERVISING ENGINEER UTILITIES
 DATE: JAN 15 2002 SERIAL NO. 798