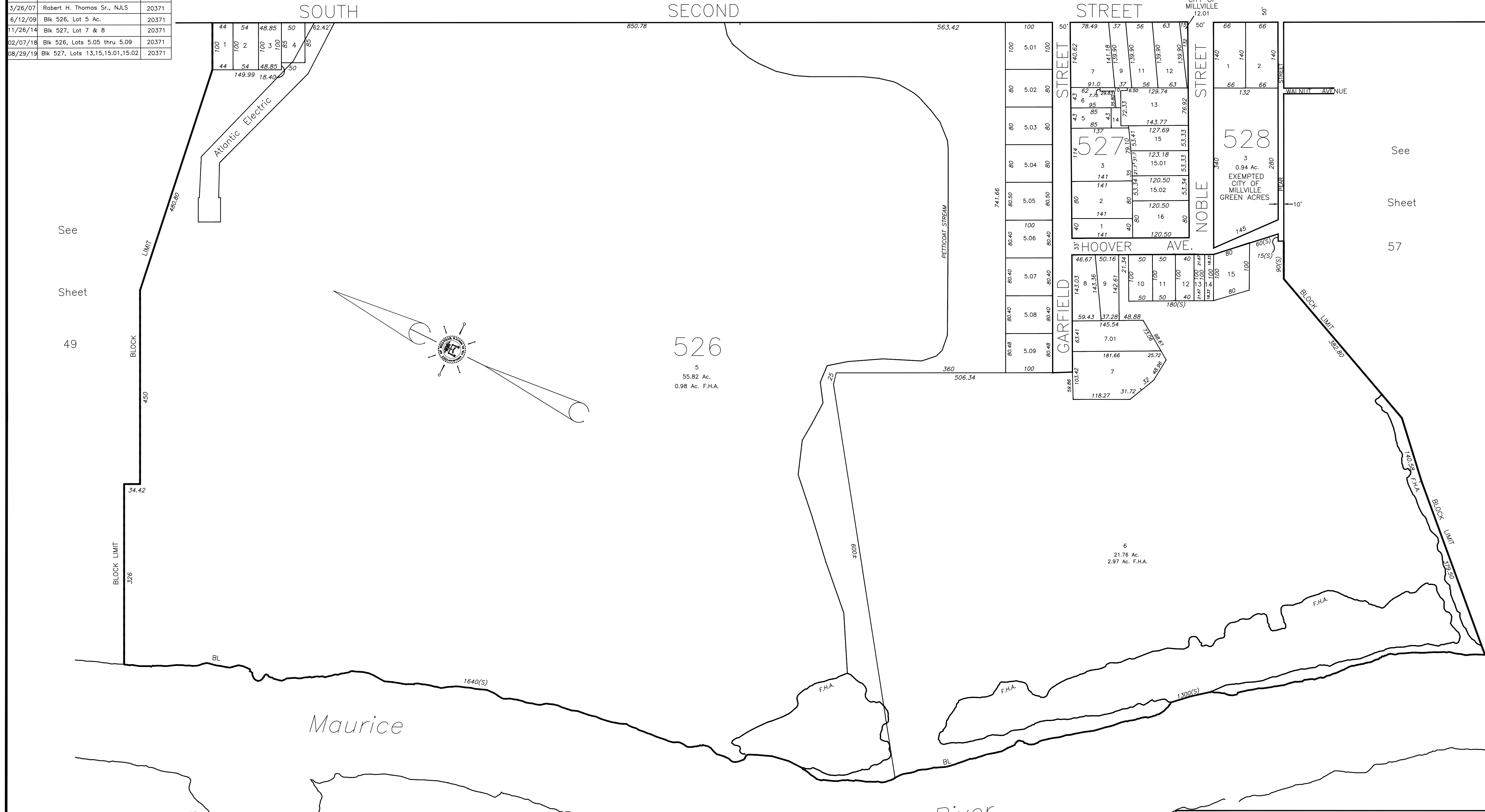


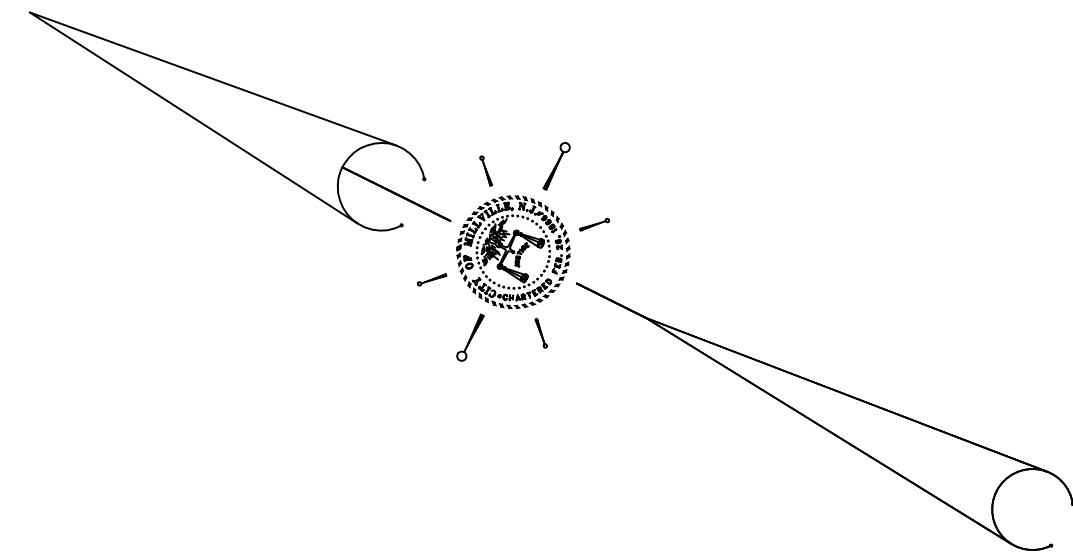
REVISIONS		
DATE	NAME	NUMBER
1/21/03	Robert H. Thomas Sr., N.J.L.S.	20371
9/22/04	Robert H. Thomas Sr., N.J.L.S.	20371
7/11/05	Robert H. Thomas Sr., N.J.L.S.	20371
3/26/07	Robert H. Thomas Sr., N.J.L.S.	20371
6/12/09	Blk 526, Lot 5 Ac.	20371
11/26/14	Blk 527, Lot 7 & 8	20371
02/07/18	Blk 526, Lots 5.05 thru 5.09	20371
08/29/19	Blk 527, Lots 13,15,15.01,15.02	20371

Sheet 50      CONRAIL RAILROAD      MAYLIN ST.      See      Sheet 56      KATES BLVD.      EXEMPTED CITY OF MILLVILLE 12.01



See  
Sheet  
49

See  
Sheet  
57



See      Sheet      22

**TAX ASSESSMENT MAP**  
CITY OF MILLVILLE  
CUMBERLAND COUNTY, NEW JERSEY  
SCALE: 1" = 100'      JUNE 2001  
ROBERT H. THOMAS, SR., N.J.L.S 20371  
2429 E. MAIN ST. MILLVILLE, NEW JERSEY

NEW JERSEY DEPARTMENT OF THE TREASURY  
DIVISION OF TAXATION  
PROPERTY ADMINISTRATION  
APPROVED AS A TAX MAP PURSUANT TO THE AUTHORITY OF  
N.J.S.A. 54:1-15 & 54:9-1  
FOR THE DIRECTOR, DIVISION OF TAXATION  
*Jana J. Coll* C.T.A.  
JANA J. COLL, CHIEF LOCAL ASSESSMENT COMPLIANCE  
*William H. Black* C.T.A.  
WILLIAM H. BLACK, SUPERVISING ENGINEER UTILITIES  
DATE: JAN 15 2002      SERIAL NO. 798

THIS SHEET IS A DIGITIZED COPY OF THE TAX MAP PREPARED BY ROBERT H. THOMAS SR., PLS AND DATED JUNE 2001. THE APPROVED ORIGINAL IS ON FILE IN THE CITY OF MILLVILLE MUNICIPAL ENGINEERS OFFICE.