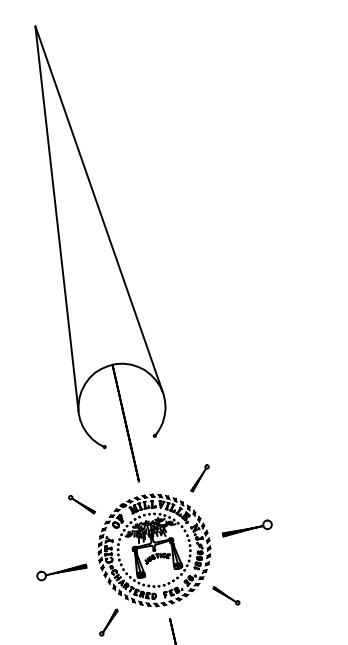
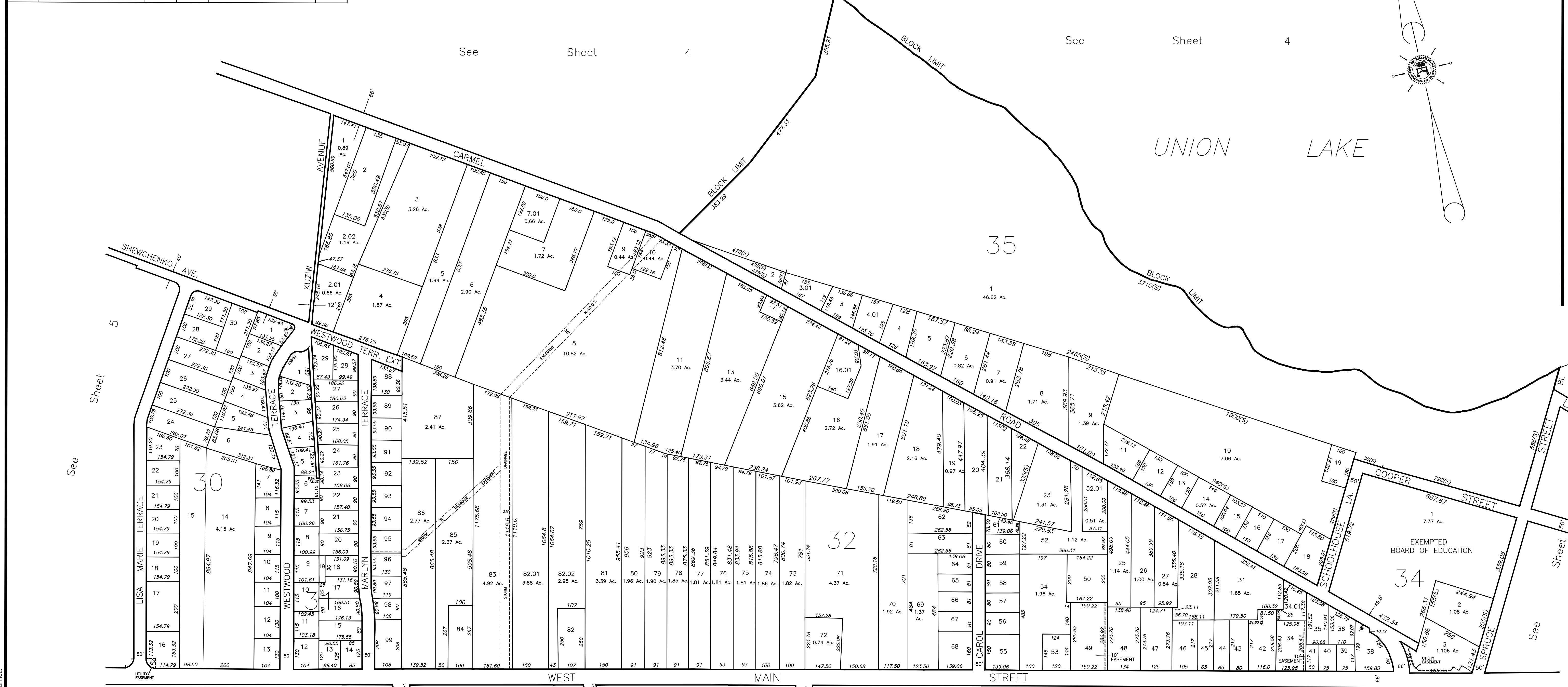


REVISIONS			REVISIONS		
DATE	NAME	NUMBER	DATE	NAME	NUMBER
5/21/04	Robert H. Thomas Sr., NJLS	20371	02/10/16	Block 32, Lot 42	20371
3/6/06	Robert H. Thomas Sr., NJLS	20371	04/06/16	Block 33, Lot 1	20371
8/1/06	Robert H. Thomas Sr., NJLS	20371	07/13/16	Block 32, Lot 34 S.S. Ease.	20371
5/29/08	Block 30	20371	12/07/17	Block 34, Lot 3	20371
1/25/09	Block 32, lots 7, 8 & 9	20371	1/08/19	Block 32, Lots 7&7.01(revised)	20371
2/23/09	Block 32, lots 34 & 34.01	20371	5/13/20	Block 28 & 29 to Sheet 5	20371
4/18/12	Sheet Check	20371			
2/10/15	Block 30, lots 24	20371			



See

See

See

See

See

See

See

THIS SHEET IS A DIGITIZED COPY OF THE TAX MAP PREPARED BY ROBERT H. THOMAS SR., P.E. AND DATED JUNE 2001. THE APPROVED ORIGINAL IS ON FILE IN THE CITY OF MILLVILLE MUNICIPAL ENGINEERS OFFICE.

NEW JERSEY DEPARTMENT OF THE TREASURY
 DIVISION OF TAXATION
 PROPERTY ADMINISTRATION
 APPROVED AS A TAX MAP PURSUANT TO THE AUTHORITY OF
 N.J.S.A. 54:1-15 & 54:9-1
 FOR THE DIRECTOR, DIVISION OF TAXATION
James J. Coll C.T.A.
 JAMES J. COLL, CHIEF LOCAL ASSESSMENT COMPLIANCE
William H. Black C.T.A.
 WILLIAM H. BLACK, SUPERVISOR ENGINEER UTILITIES
 DATE: JAN 15 2002 SERIAL NO. 798

TAX ASSESSMENT MAP
 CITY OF MILLVILLE
 CUMBERLAND COUNTY, NEW JERSEY
 SCALE: 1" = 200'
 JUNE 2001
 ROBERT H. THOMAS, SR., NJLS 20371
 2429 E. MAIN ST. MILLVILLE, NEW JERSEY