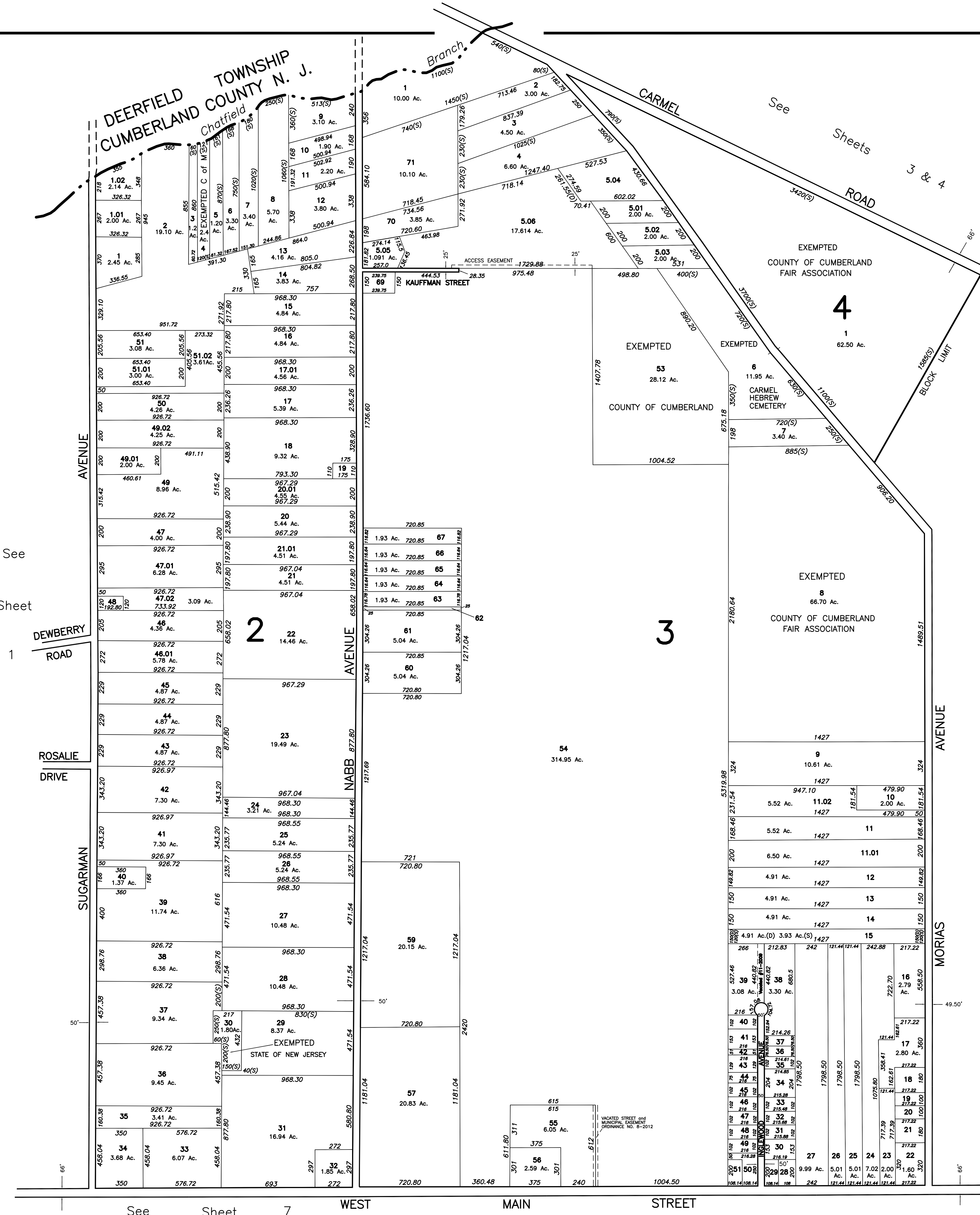
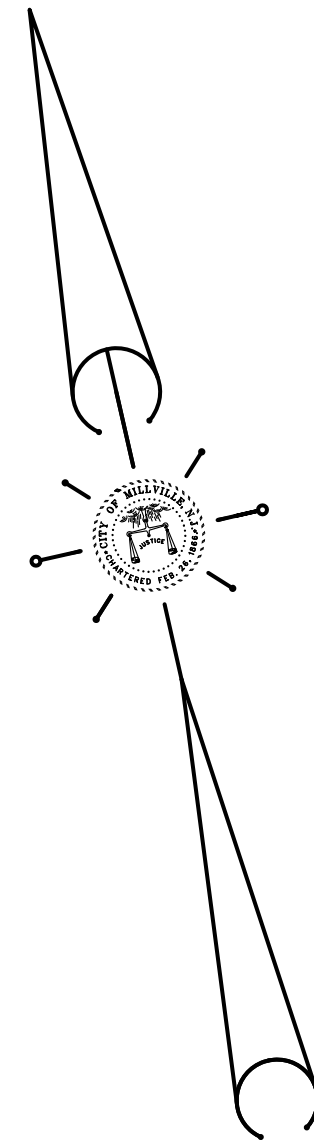


REVISIONS		
DATE	NAME	NUMBER
11/15/02	Robert H. Thomas Sr., N.J.L.S.	20371
5/15/03	Robert H. Thomas Sr., N.J.L.S.	20371
3/29/04	Robert H. Thomas Sr., N.J.L.S.	20371
7/27/04	Robert H. Thomas Sr., N.J.L.S.	20371
2/16/06	Robert H. Thomas Sr., N.J.L.S.	20371
3/13/09	Blk 3, Lots 38 & 39 vacation	20371
4/18/12	Blk 2, Lots 8, 9, 13 & 47.02	20371
2/20/13	Blk 2, Lots 51 & 51.02	20371



THIS SHEET IS A DIGITIZED COPY OF THE TAX MAP PREPARED BY ROBERT H. THOMAS SR., P.E. AND DATED JUNE 2001. THE APPROVED ORIGINAL IS ON FILE IN THE CITY OF MILLVILLE MUNICIPAL ENGINEERS OFFICE.

NEW JERSEY DEPARTMENT OF THE TREASURY  
 DIVISION OF TAXATION  
 PROPERTY ADMINISTRATION  
 APPROVED AS A TAX MAP PURSUANT TO THE AUTHORITY OF  
 N.J.S.A. 54:1-15 & 54:50-1  
 FOR THE DIRECTOR, DIVISION OF TAXATION  
*James J. Coll* C.T.A.  
*William H. Black* C.T.A.  
 WILLIAM H. BLACK, SUPERVISING ENGINEER UTILITIES  
 DATE: JAN 15 2002 SERIAL NO. 798

**TAX ASSESSMENT MAP**  
**CITY OF MILLVILLE**  
 CUMBERLAND COUNTY, NEW JERSEY  
 SCALE: 1" = 400'  
 JUNE 2001  
**ROBERT H. THOMAS, SR., N.J.L.S 20371**  
 2429 E. MAIN ST. MILLVILLE, NEW JERSEY