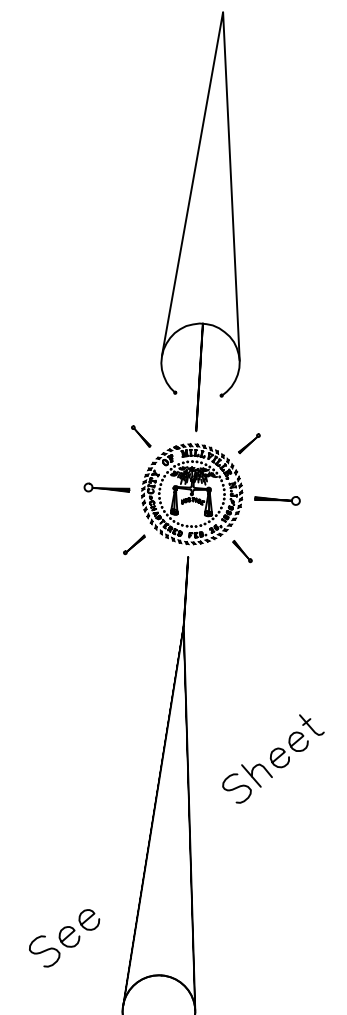


REVISIONS		
DATE	NAME	NUMBER
1/21/03	Robert H. Thomas Sr., NJLS	20371
3/31/03	Robert H. Thomas Sr., NJLS	20371
10/6/03	Robert H. Thomas Sr., NJLS	20371
5/24/04	Robert H. Thomas Sr., NJLS	20371
7/27/04	Robert H. Thomas Sr., NJLS	20371
4/12/05	Robert H. Thomas Sr., NJLS	20371
4/18/05	Robert H. Thomas Sr., NJLS	20371
8/18/05	Robert H. Thomas Sr., NJLS	20371
12/23/09	Blk. 294, L 3 & 3.01	20371
4/12/10	Blk. 301, L 10	20371
11/22/10	Blk. 293, L 11(delete 9.01&12)	20371
1/12/11	Blk. 301, L 8, 8.01 & 10	20371
5/01/12	Blk. 285, L 29, Blk. 293, L20.01	20371
1/13/16	Blk. 301, L 1	20371
2/12/16	Blk. 302, L 14	20371
7/27/17	Blk. 292, L 11 & 14	20371
1/10/18	Blk. 300, L 2	20371
2/07/18	Blk. 292, L 4	20371
11/7/19	Blk. 302, L 11 (Tax Exempt)	20371



THIS SHEET IS A DIGITIZED COPY OF THE TAX MAP PREPARED BY ROBERT H. THOMAS SR., PLS AND DATED JUNE 2001. THE APPROVED ORIGINAL IS ON FILE IN THE CITY OF MILLVILLE MUNICIPAL ENGINEERS OFFICE.

See Sheet 41

NEW JERSEY DEPARTMENT OF THE TREASURY
 DIVISION OF TAXATION
 PROPERTY ADMINISTRATION
 APPROVED AS A TAX MAP PURSUANT TO THE AUTHORITY OF
 N.J.S.A. 54:15-15 & 54:5-4
 FOR THE DIRECTOR, DIVISION OF TAXATION
Janae J. Coll C.T.A.
William H. Black C.T.A.
 DATE: JAN 15 2022 SERIAL NO. 798

TAX ASSESSMENT MAP
 CITY OF MILLVILLE
 CUMBERLAND COUNTY, NEW JERSEY
 SCALE: 1" = 100'
 JUNE 2001
 ROBERT H. THOMAS, SR., NJLS 20371
 2429 E. MAIN ST. MILLVILLE, NEW JERSEY