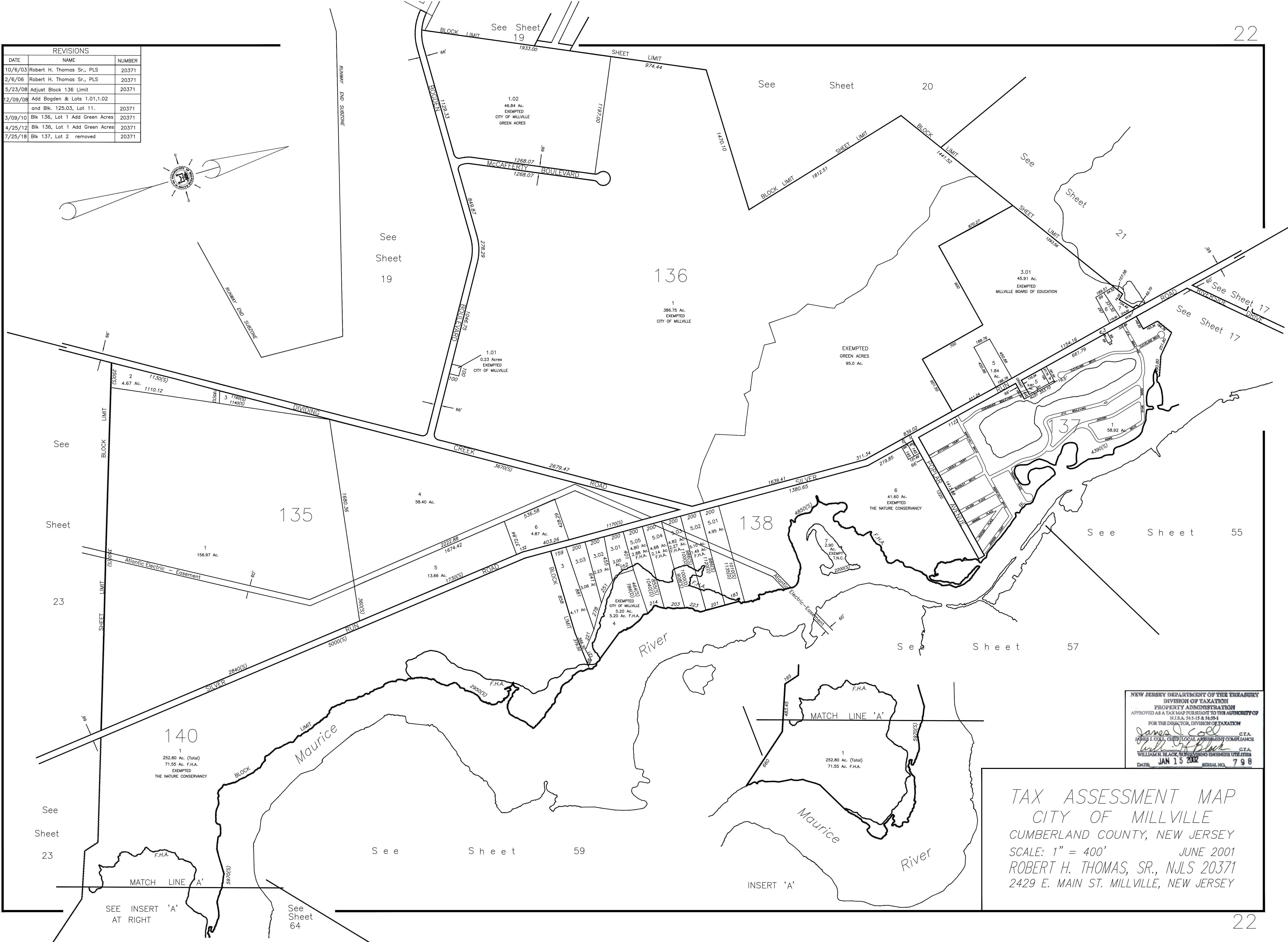
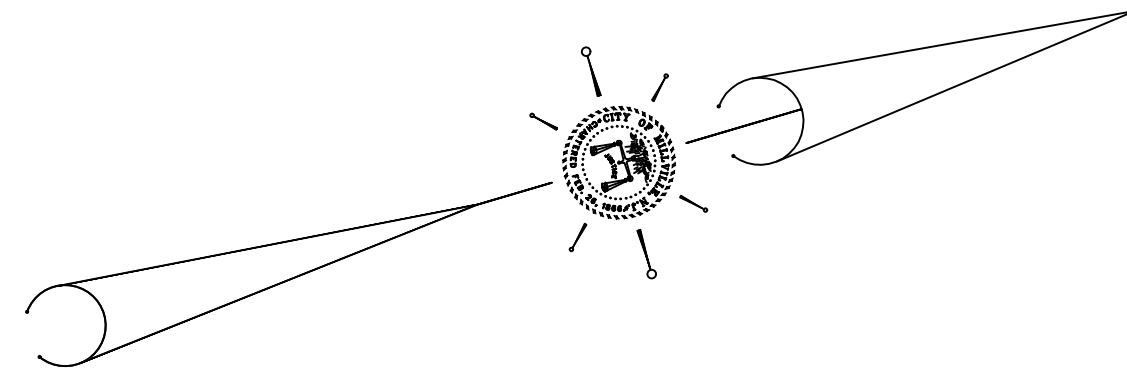


REVISIONS		
DATE	NAME	NUMBER
10/6/03	Robert H. Thomas Sr., PLS	20371
2/6/06	Robert H. Thomas Sr., PLS	20371
5/23/08	Adjust Block 136 Limit	20371
12/09/08	Add Bogden & Lots 1.01, 1.02 and Blk. 125.03, Lot 11.	20371
3/09/10	Blk 136, Lot 1 Add Green Acres	20371
4/25/12	Blk 136, Lot 1 Add Green Acres	20371
7/25/18	Blk 137, Lot 2 removed	20371



NEW JERSEY DEPARTMENT OF THE TREASURY  
 DIVISION OF TAXATION  
 PROPERTY ADMINISTRATION  
 APPROVED AS A TAX MAP PURSUANT TO THE AUTHORITY OF  
 N.J.S.A. 54:1-15 & 54:20-1  
 FOR THE DIRECTOR, DIVISION OF TAXATION  
*James J. Coll* C.T.A.  
*William H. Black* C.T.A.  
 WILLIAM H. BLACK, SUPERVISING ENGINEER UTILITIES  
 DATE: JAN 15 2002 SERIAL NO. 798

TAX ASSESSMENT MAP  
 CITY OF MILLVILLE  
 CUMBERLAND COUNTY, NEW JERSEY  
 SCALE: 1" = 400'  
 JUNE 2001  
 ROBERT H. THOMAS, SR., N.J.S. 20371  
 2429 E. MAIN ST. MILLVILLE, NEW JERSEY

THIS SHEET IS A DIGITIZED COPY OF THE TAX MAP PREPARED BY ROBERT H. THOMAS, SR., PLS AND DATED JUNE 2001. THE APPROVED ORIGINAL IS ON FILE IN THE CITY OF MILLVILLE MUNICIPAL ENGINEERS OFFICE.