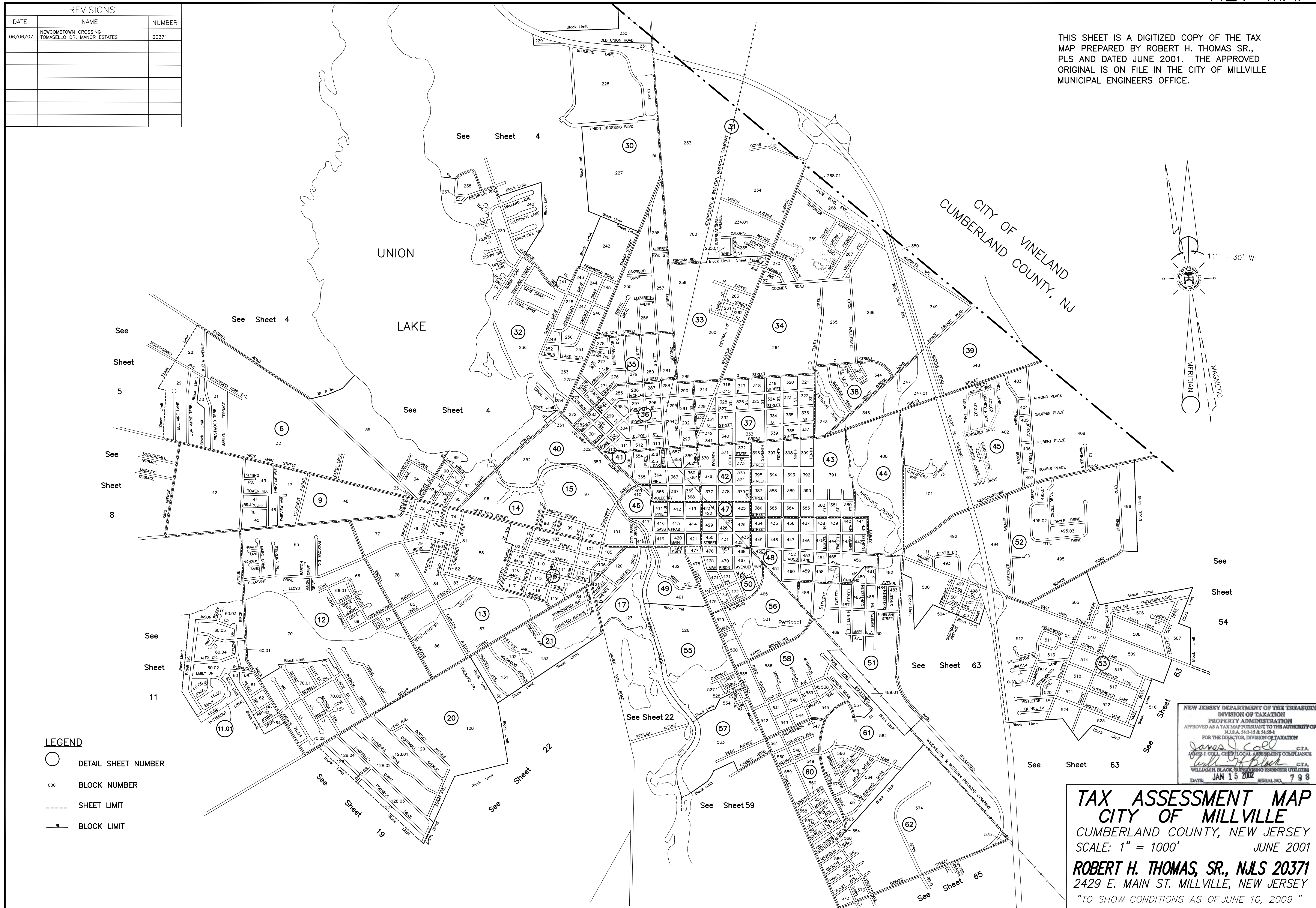


REVISIONS		
DATE	NAME	NUMBER
06/06/07	NEWCOMBTOWN CROSSING TOMASELLO DR., MANOR ESTATES	20371

THIS SHEET IS A DIGITIZED COPY OF THE TAX MAP PREPARED BY ROBERT H. THOMAS SR., PLS AND DATED JUNE 2001. THE APPROVED ORIGINAL IS ON FILE IN THE CITY OF MILLVILLE MUNICIPAL ENGINEERS OFFICE.



NEW JERSEY DEPARTMENT OF THE TREASURY
DIVISION OF TAXATION
PROPERTY ADMINISTRATION
APPROVED AS A TAX MAP PURSUANT TO THE AUTHORITY OF
N.J.S.A. 54:1-15 & 54:9-1
FOR THE DIRECTOR, DIVISION OF TAXATION
JAMES J. COLL C.T.A.
JAMES J. COLL, CHIEF LOCAL ASSESSMENT COMPLIANCE
William H. Black C.T.A.
WILLIAM H. BLACK, SUPERVISING ENGINEER UTILITIES
DATE: JAN 15 2002 SERIAL NO. 798

TAX ASSESSMENT MAP
CITY OF MILLVILLE
CUMBERLAND COUNTY, NEW JERSEY
SCALE: 1" = 1000'
JUNE 2001
ROBERT H. THOMAS, SR., N.J.S. 20371
2429 E. MAIN ST. MILLVILLE, NEW JERSEY
"TO SHOW CONDITIONS AS OF JUNE 10, 2009"