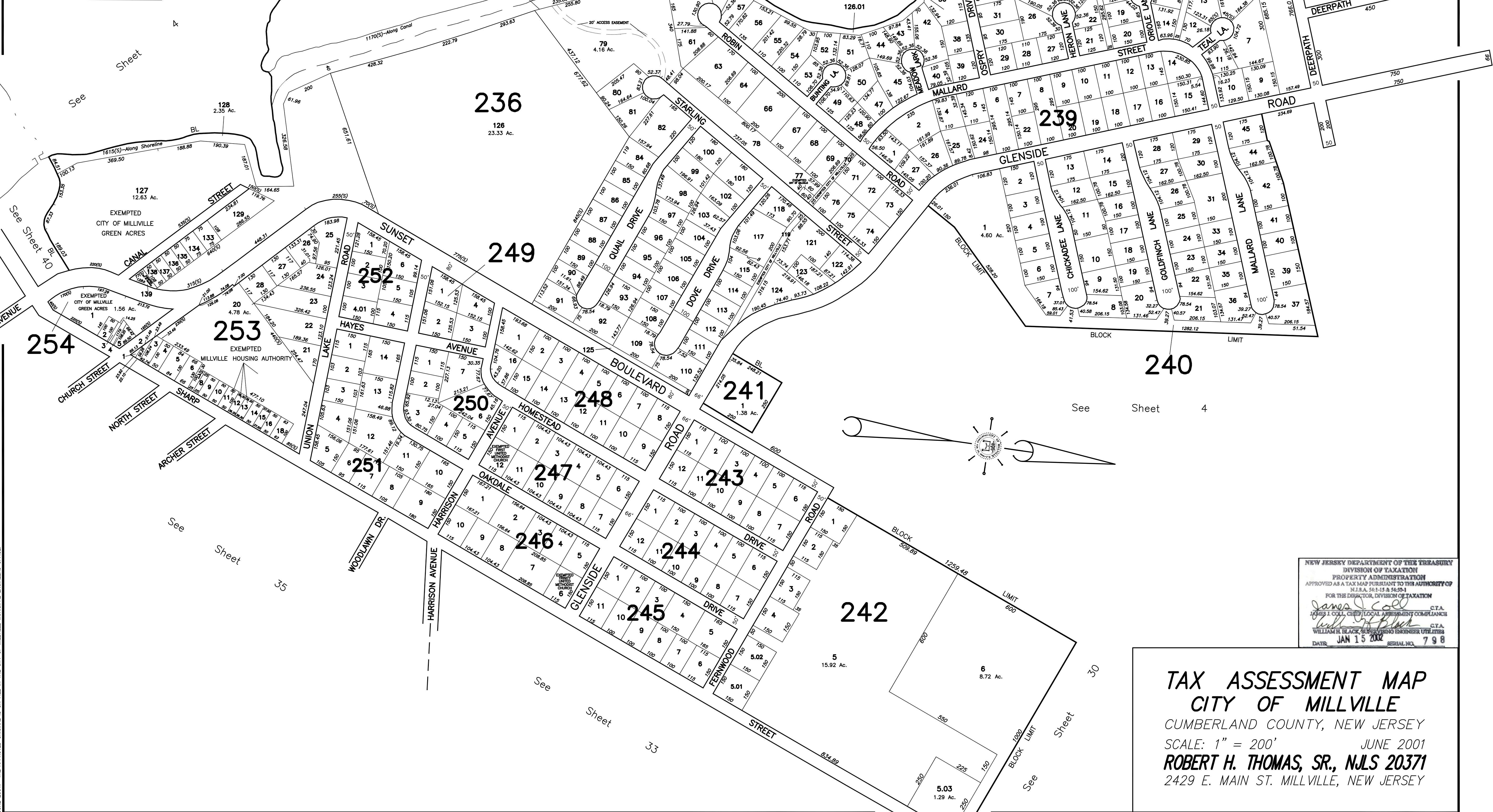


REVISIONS		
DATE	NAME	NUMBER
09/23/02	Robert H. Thomas Sr., N.J.S.	20371
11/15/02	Robert H. Thomas Sr., N.J.S.	20371
12/17/02	Robert H. Thomas Sr., N.J.S.	20371
3/31/03	Robert H. Thomas Sr., N.J.S.	20371
7/25/03	Robert H. Thomas Sr., N.J.S.	20371
3/29/04	Robert H. Thomas Sr., N.J.S.	20371
3/22/05	Robert H. Thomas Sr., N.J.S.	20371
3/30/07	Robert H. Thomas Sr., N.J.S.	20371
8/31/09	Blk 236, Lots 126 & 128	20371
1/15/10	Blk 238, Lot 1	20371
1/15/10	Blk 239, Lot 5	20371
5/01/12	Checked Sheet	20371
2/19/14	Blk 236, Lots 70 & 119	20371



NEW JERSEY DEPARTMENT OF THE TREASURY
 DIVISION OF TAXATION
 PROPERTY ADMINISTRATION
 APPROVED AS A TAX MAP PURSUANT TO THE AUTHORITY OF
 N.J.S.A. 54:1-15 & 54:50-1
 FOR THE DIRECTOR, DIVISION OF TAXATION
James J. Coll C.T.A.
 JAMES J. COLL, CHIEF, LOCAL ASSESSMENT COMPLIANCE
William H. Black C.T.A.
 WILLIAM H. BLACK, SUPERVISING ENGINEER UTILITIES
 DATE: JAN 15 2002 SERIAL NO. 798

TAX ASSESSMENT MAP
CITY OF MILLVILLE
 CUMBERLAND COUNTY, NEW JERSEY
 SCALE: 1" = 200' JUNE 2001
ROBERT H. THOMAS, SR., N.J.S. 20371
 2429 E. MAIN ST. MILLVILLE, NEW JERSEY

THIS SHEET IS A DIVIDED COPY OF THE TAX MAP PREPARED BY ROBERT H. THOMAS SR., PLS. AND DATED JUNE 2001. THE APPROVED ORIGINAL IS ON FILE IN THE CITY OF MILLVILLE MUNICIPAL ENGINEERS OFFICE.