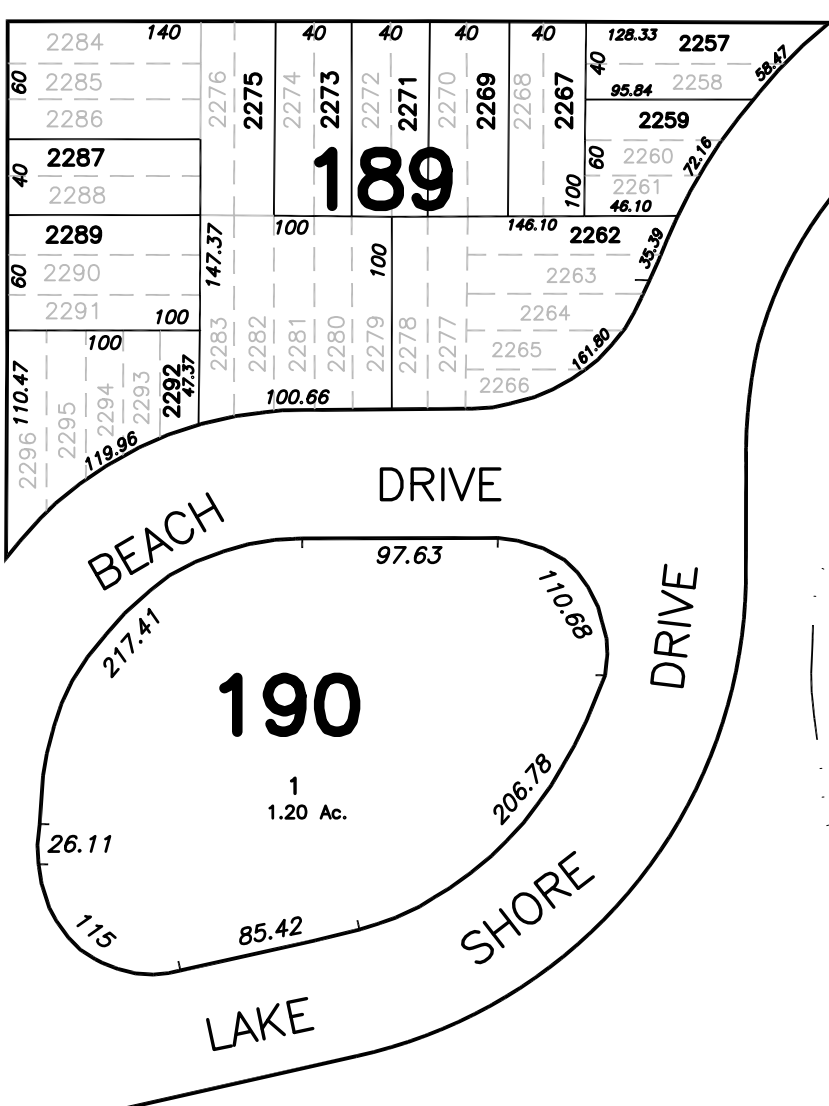
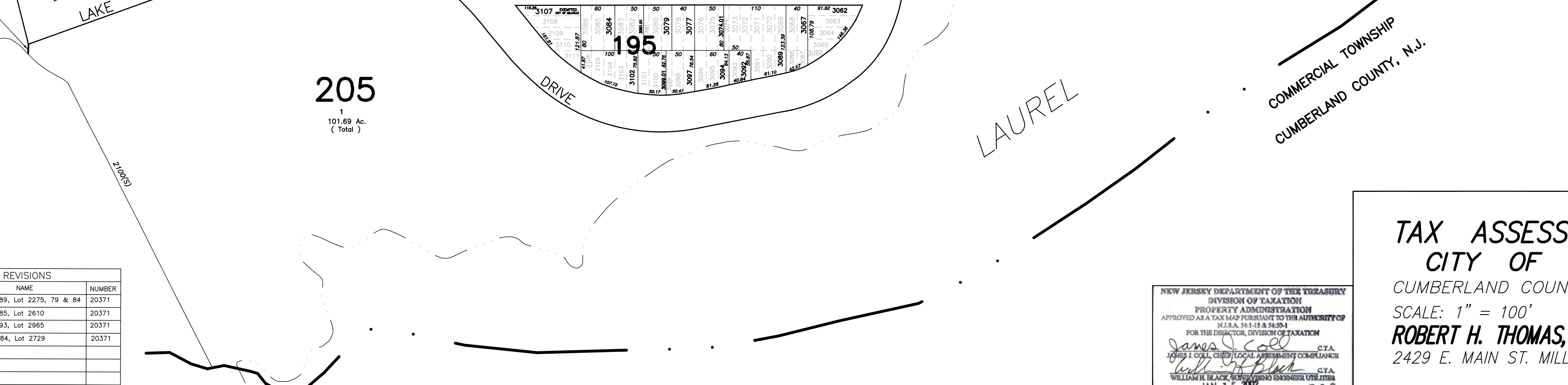
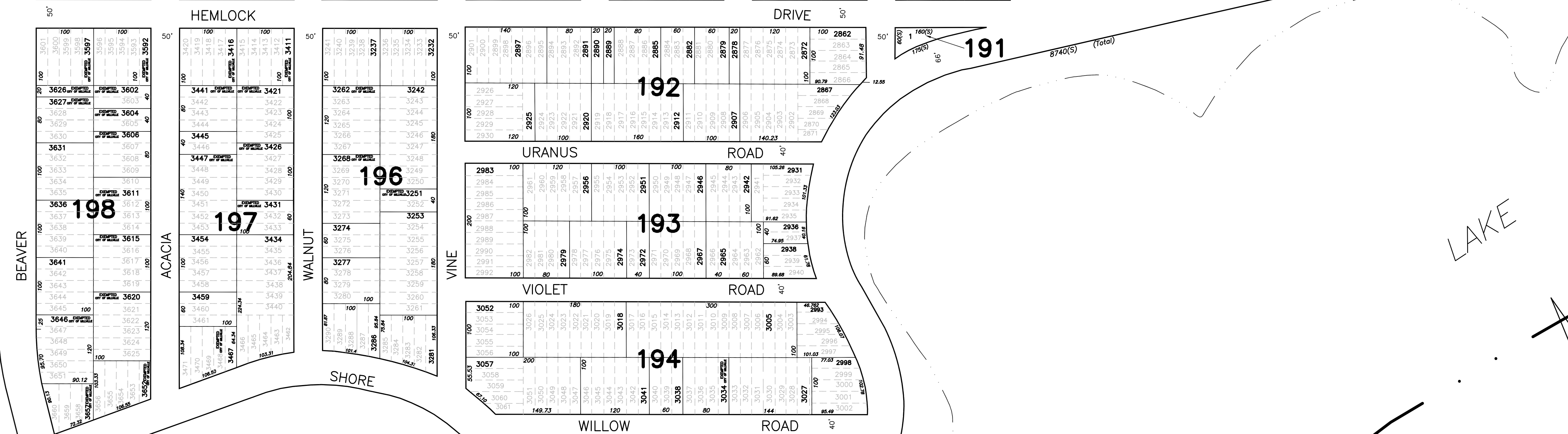
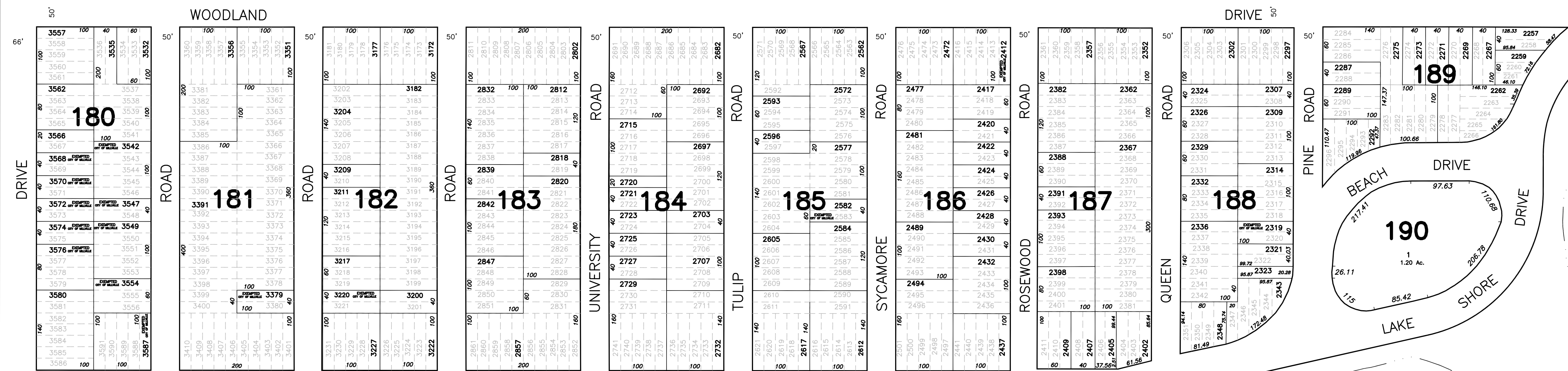


See Sheet 26

OAK ROAD  
NARCISSUS ROAD  
PARK DRIVE



LAKE

LAUREL

COMMERCIAL TOWNSHIP  
CUMBERLAND COUNTY, N.J.

**TAX ASSESSMENT MAP**  
**CITY OF MILLVILLE**  
CUMBERLAND COUNTY, NEW JERSEY  
SCALE: 1" = 100'  
JUNE 2001  
**ROBERT H. THOMAS, SR., N.J.S. 20371**  
2429 E. MAIN ST. MILLVILLE, NEW JERSEY

NEW JERSEY DEPARTMENT OF THE TREASURY  
DIVISION OF TAXATION  
PROPERTY ADMINISTRATION  
APPROVED AS A TAX MAP PURSUANT TO THE AUTHORITY OF  
N.J.S.A. 54:15 & 54:9-1  
FOR THE DIRECTOR, DIVISION OF TAXATION  
*James J. Coll* C.T.A.  
*James I. Coll* C.T.A.  
*William H. Black* C.T.A.  
WILLIAM H. BLACK, SUPERVISOR ENGINEER UTILITIES  
DATE: JAN 15 2002 SERIAL NO. 798

REVISIONS		
DATE	NAME	NUMBER
11/25/09	Block 189, Lot 2275, 79 & 84	20371
11/25/09	Block 185, Lot 2610	20371
4/25/12	Block 193, Lot 2965	20371
11/13/13	Block 184, Lot 2729	20371

THIS SHEET IS A DIGITIZED COPY OF THE TAX MAP PREPARED BY ROBERT H. THOMAS SR., PLS AND DATED JUNE 2001. THE APPROVED ORIGINAL IS ON FILE IN THE CITY OF MILLVILLE MUNICIPAL ENGINEERS OFFICE.

See Sheet 23

Sheet Limit  
Sheet 28  
Sheet Limit