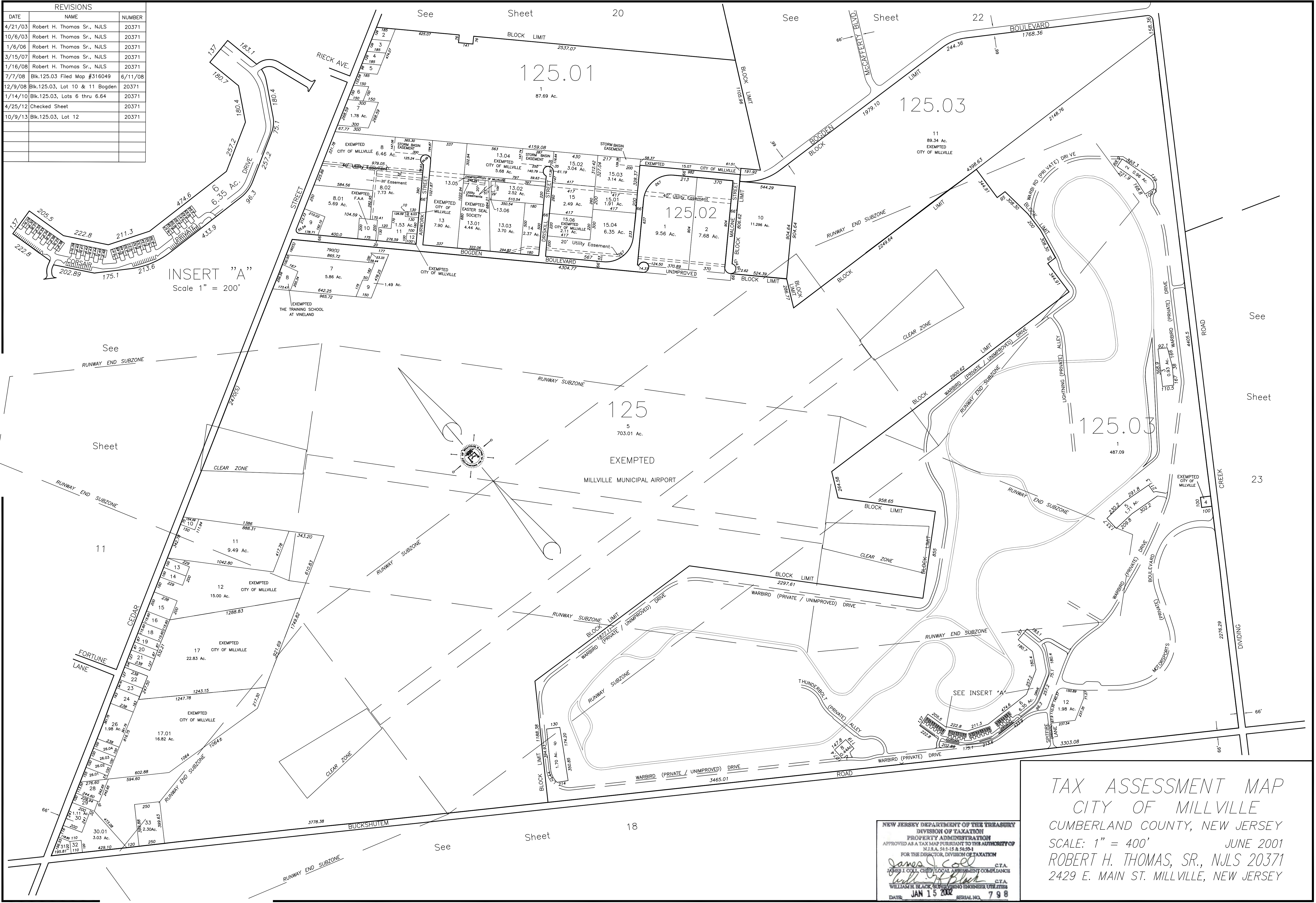


REVISIONS		
DATE	NAME	NUMBER
4/21/03	Robert H. Thomas Sr., N.J.L.S.	20371
10/6/03	Robert H. Thomas Sr., N.J.L.S.	20371
1/6/06	Robert H. Thomas Sr., N.J.L.S.	20371
3/15/07	Robert H. Thomas Sr., N.J.L.S.	20371
1/16/08	Robert H. Thomas Sr., N.J.L.S.	20371
7/7/08	Bk. 125.03 Filed Map #316049	6/11/08
12/9/08	Bk. 125.03, Lot 10 & 11 Bogden	20371
1/14/10	Bk. 125.03, Lots 6 thru 6.64	20371
4/25/12	Checked Sheet	20371
10/9/13	Bk. 125.03, Lot 12	20371



INSERT "A"
Scale 1" = 200'

TAX ASSESSMENT MAP
CITY OF MILLVILLE
CUMBERLAND COUNTY, NEW JERSEY
SCALE: 1" = 400' JUNE 2001
ROBERT H. THOMAS, SR., N.J.L.S. 20371
2429 E. MAIN ST. MILLVILLE, NEW JERSEY

NEW JERSEY DEPARTMENT OF THE TREASURY
DIVISION OF TAXATION
PROPERTY ADMINISTRATION
APPROVED AS A TAX MAP PURSUANT TO THE AUTHORITY OF
N.J.S.A. 54:1-15 & 54:29-1
FOR THE DIRECTOR, DIVISION OF TAXATION
Jana L. Gell C.T.A.
JAMES I. CELL, CHIEF LOCAL ASSESSMENT COMPLIANCE
William H. Black C.T.A.
WILLIAM H. BLACK, SUPERVISING ENGINEER UTILITIES
DATE: JAN 15 2011 SERIAL NO. 798

THIS SHEET IS A DIGITIZED COPY OF THE TAX MAP PREPARED BY ROBERT H. THOMAS SR., P.L.S. AND DATED JUNE 2001. THE APPROVED ORIGINAL IS ON FILE IN THE CITY OF MILLVILLE MUNICIPAL ENGINEERS OFFICE.