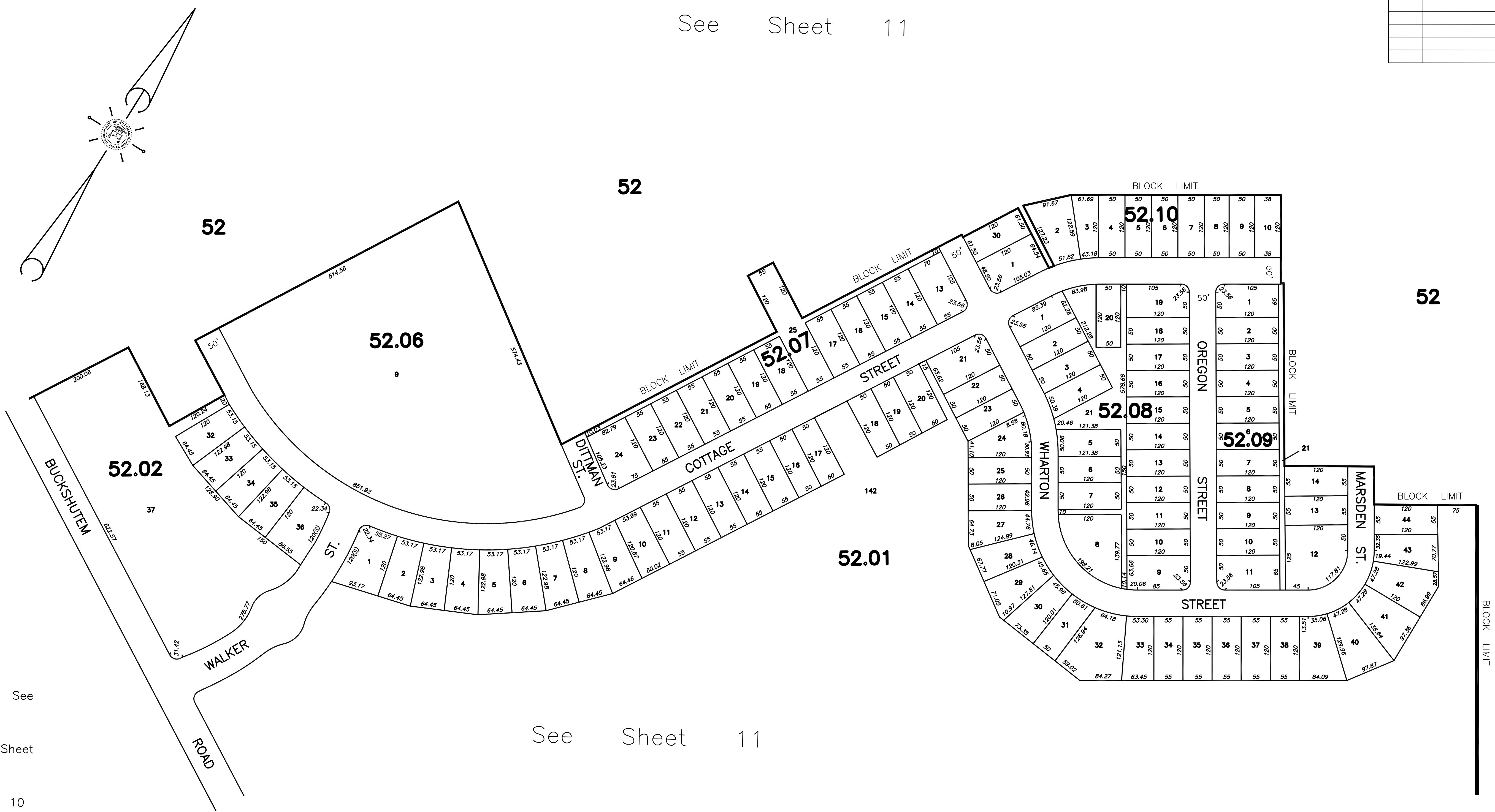


REVISIONS		
DATE	NAME	NUMBER
4/25/12	Checked Sheet	20371
11/04/13	Blk 52.01 Lot 31 to 30	20371

See Sheet 11



See Sheet 10

See Sheet 11

THIS SHEET IS A DIGITIZED COPY OF THE TAX MAP PREPARED BY ROBERT H. THOMAS, SR., P.E. AND DATED JUNE 2001. THE APPROVED ORIGINAL IS ON FILE IN THE CITY OF MILLVILLE MUNICIPAL ENGINEERING OFFICE.

NEW JERSEY DEPARTMENT OF THE TREASURY
 DIVISION OF TAXATION
 PROPERTY ADMINISTRATION
 APPROVED AS A TAX MAP PURSUANT TO THE AUTHORITY OF
 N.J.S.A. 54:1-15 & 54:9-1
 FOR THE DIRECTOR, DIVISION OF TAXATION
James J. Coll C.T.A.
 JAMES J. COLL, CHIEF LOCAL ASSESSMENT COMPLIANCE
William H. Black C.T.A.
 WILLIAM H. BLACK, SUPERVISOR ENGINEER UTILITIES
 DATE: JAN 15 2002 SERIAL NO. 798

TAX ASSESSMENT MAP
CITY OF MILLVILLE
 CUMBERLAND COUNTY, NEW JERSEY
 SCALE: 1" = 100' JUNE 2001
ROBERT H. THOMAS, SR., NJLS 20371
 2429 E. MAIN ST. MILLVILLE, NEW JERSEY