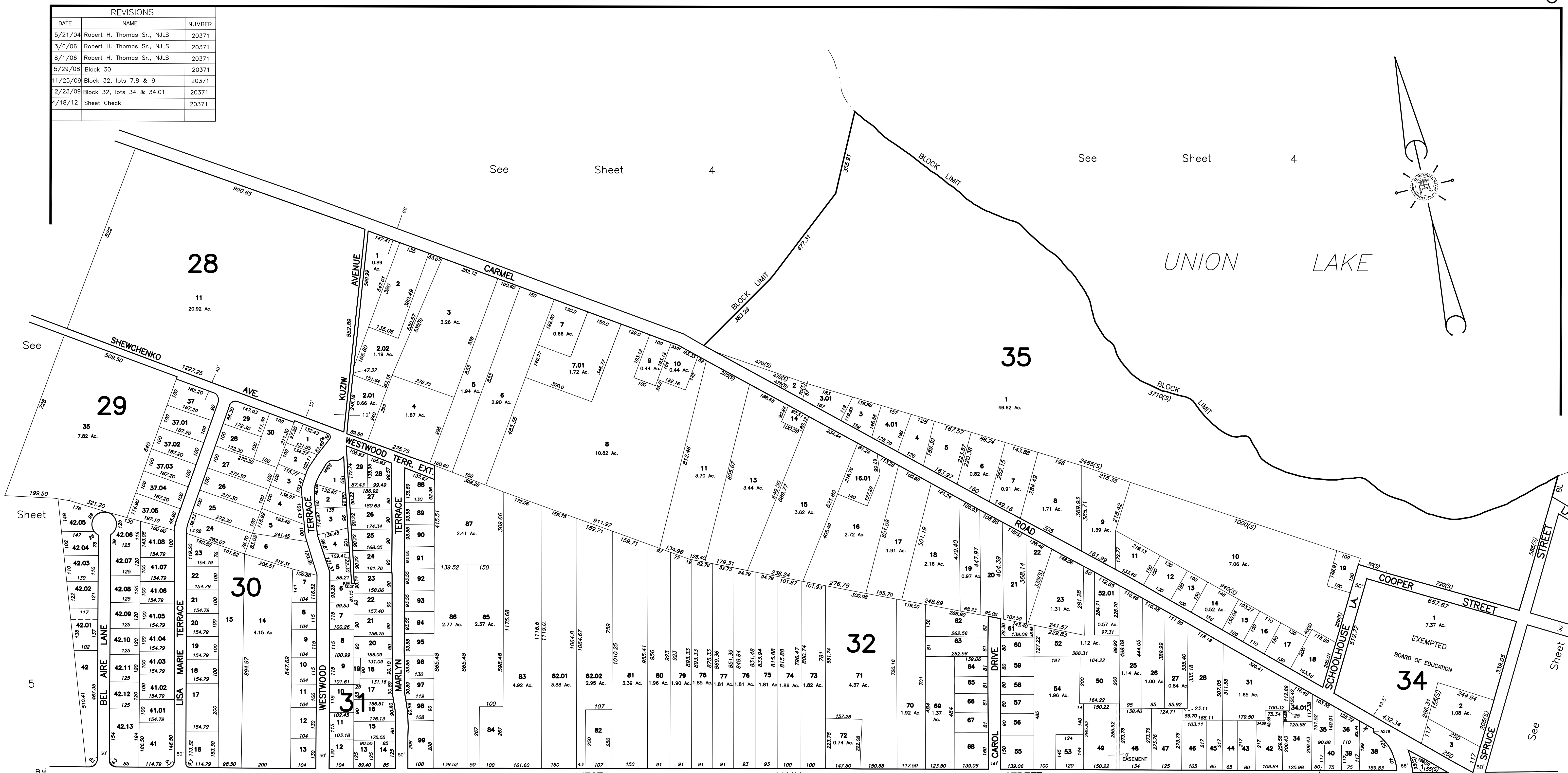


REVISIONS		
DATE	NAME	NUMBER
5/21/04	Robert H. Thomas Sr., NJLS	20371
3/6/06	Robert H. Thomas Sr., NJLS	20371
8/1/06	Robert H. Thomas Sr., NJLS	20371
5/29/08	Block 30	20371
11/25/09	Block 32, lots 7, 8 & 9	20371
12/23/09	Block 32, lots 34 & 34.01	20371
4/18/12	Sheet Check	20371



See Sheet 4  
See Sheet 4  
See Sheet 13  
See Sheet 14  
See Sheet 9

THIS SHEET IS A DIGITIZED COPY OF THE TAX MAP PREPARED BY ROBERT H. THOMAS SR., PLS AND DATED JUNE 2001. THE APPROVED ORIGINAL IS ON FILE IN THE CITY OF MILLVILLE MUNICIPAL ENGINEERS OFFICE.

**TAX ASSESSMENT MAP**  
**CITY OF MILLVILLE**  
 CUMBERLAND COUNTY, NEW JERSEY  
 SCALE: 1" = 200'  
 JUNE 2001  
**ROBERT H. THOMAS, SR., NJLS 20371**  
 2429 E. MAIN ST. MILLVILLE, NEW JERSEY

NEW JERSEY DEPARTMENT OF THE TREASURY  
 DIVISION OF TAXATION  
 PROPERTY ADMINISTRATION  
 APPROVED AS A TAX MAP PURSUANT TO THE AUTHORITY OF  
 N.J.S.A. 54:1-15 & 54:2-1  
 FOR THE DIRECTOR, DIVISION OF TAXATION  
*Jana J. Coll* C.T.A.  
 JAMES J. COLL, CHIEF LOCAL ASSESSMENT COMPLIANCE  
*William H. Black* C.T.A.  
 WILLIAM H. BLACK, SENIOR ENGINEER (P.E.)  
 DATE: JAN 15 2012 SERIAL NO. 798